



Cat[®] TH414

Telehandler

Specifications

Engine

| | |
|----------------|------------------------------|
| Model | Cat [®] C4.4 DITAAC |
| Gross Power | 74.5 kW/101 hp |
| Maximum Torque | 410 Nm/1400 rpm |
| Bore | 105 mm |
| Stroke | 127 mm |
| Displacement | 4.4 litre |

Weights

| | |
|--|---------|
| Operating Weight with Carriage & Forks | 9550 kg |
|--|---------|

Operating Specifications

| | |
|-----------------------------------|-----------|
| Rated Load Capacity | |
| On Tyres | 3700 kg |
| On Stabilizers | 3700 kg |
| Maximum Lift Height | |
| Stabilizers Up | 13 700 mm |
| Stabilizers Down | 13 700 mm |
| Maximum Forward Reach | 9225 mm |
| Top Travel Speed | 32 km/h |
| Load at Max Height | |
| Stabilizers Up | 1250 kg |
| Stabilizers Down | 2500 kg |
| Load at Max Reach | |
| Stabilizers Up | 350 kg |
| Stabilizers Down | 1000 kg |
| Outside Turning Radius Over Tyres | 3805 mm |
| Outside Turning Radius Over Forks | 5640 mm |
| Drawbar Pull 74.5 kW | 88,0 kN |

Service Refill Capacities

| | |
|----------------|-----------|
| Fuel Tank | 150 litre |
| Hydraulic Tank | 90 litre |

Tyres

| | |
|----------|-----------------|
| Standard | 15.5/80-24 16PR |
|----------|-----------------|

Brakes

| | |
|----------------|------------------------------|
| Service Brakes | Servo assisted on front axle |
| Parking Brakes | Mechanical on front axle |

Hydraulic System

| | |
|----------------------------|--|
| Maximum System Pressure | 250 bar |
| Maximum Pump Flow | 113 litre/min |
| Pump Type | Variable displacement load sensing axial piston pump |
| Auxiliary Hydraulic Supply | |
| Intermittent | 80 litre/min |
| Continuous | 60 litre/min |

Transmission Speeds

| | |
|---------|---------|
| Forward | |
| 1 | 7 km/h |
| 2 | 12 km/h |
| 3 | 21 km/h |
| 4 | 32 km/h |
| Reverse | |
| 1 | 7 km/h |
| 2 | 12 km/h |
| 3 | 21 km/h |

Boom Performance

| | |
|-----------------------------------|--------------|
| Boom Up | 13.0 Seconds |
| Boom Down | 8.0 Seconds |
| Tele In | 11.0 Seconds |
| Tele Out | 11.0 Seconds |
| Crowd Forward (dump) | 3.0 Seconds |
| Crowd Backward | 3.0 Seconds |
| Combined | |
| Up and Out | 23.0 Seconds |
| Down and In | 13.4 Seconds |
| Bucket Breakout Force to ISO 8313 | 65 kN |
| Boom Breakout Force | 45 kN |

Sound

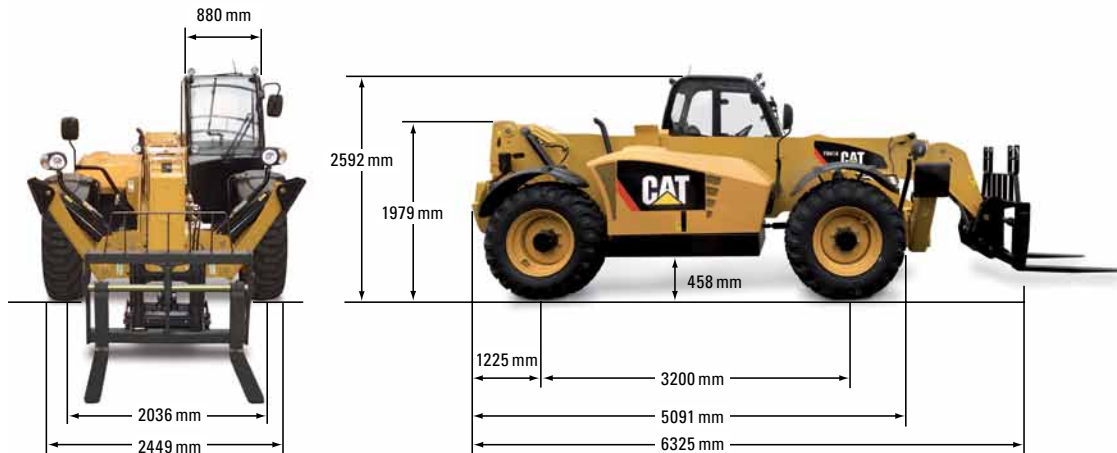
| | |
|---------------------------------|-----------|
| Operator Sound | 78 dB(A) |
| Exterior Sound (74.5 kW Engine) | 106 dB(A) |



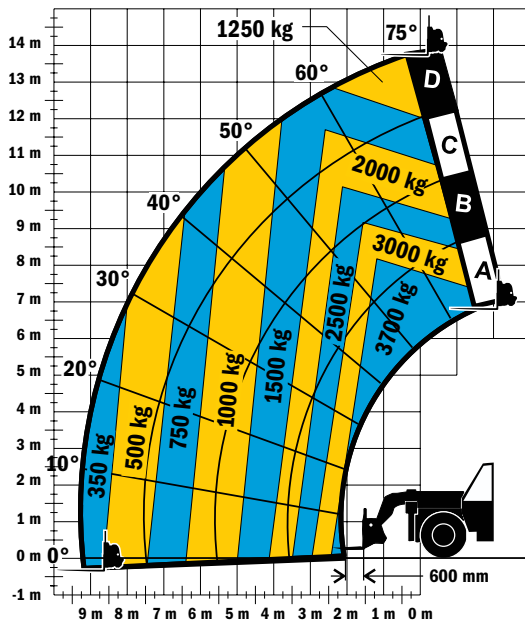
TH414 Telehandler

Dimensions

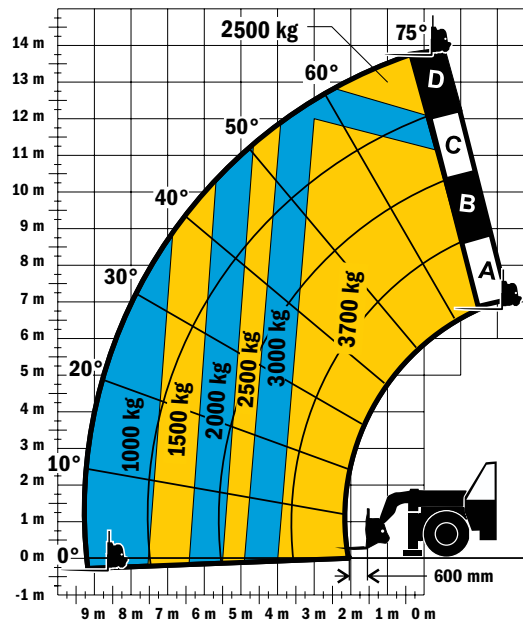
All dimensions are approximate.



Load Chart and Dimensions



Stabilizers Up



Stabilizers Down

IMPORTANT

Rated lift capacities shown are with machine equipped with standard carriage and pallet forks. When lifting a load, the machine requires a firm surface with undamaged, properly inflated tyres. Machine specifications and stability are based on rated lift capacities at specific boom angles and boom lengths. (If specifications are critical, the proposed application should be discussed with your dealer.)

DO NOT exceed rated lift capacity loads, as unstable and dangerous machine conditions will result.

DO NOT tip the machine forward to determine the allowable load.

Due to continuous product improvements, machine specifications and/or equipment changes may be made without prior notification.

This machine meets or exceeds AS1418.19-2007 as originally manufactured for intended applications. When utilising a suspended load, the JLG Load Management Indicator System (LMIS) must be installed in order to remain compliant with AS1418.19-2007.